



**SPECIALIZING  
METAL  
CUTTING, MACHINE  
PROCESSING AND  
METAL SUPPLYING  
SERVICES**





# **ALM**

## **Absolute Laser & MFG**

**Absolute Laser & MFG is your partner for  
cutting and custom processing of metal.  
We offer our specialized services for your  
other exclusive needs as well.**

**5 – Racine Road, Etobicoke – ON M9W 2Z2**

 **(416) 749 5050**

 **(416) 749 5051**



**info@absolutelaser.ca  
www.absolutelaser.ca**

# **2024**

# Contents



- Construction
- Energy
- Food Processing
- Heavy Equipment
- Marine
- Material Handling
- Medical
- Oil and Gas
- Pharmaceutical
- Power
- Safety
- Transportation

1	About Company
2	Vision & Mission
3	Capability
4	Sheet Laser
5	Tube Laser
6	Milling and Lathe
7	Brake Press
8	Facilities
9	Our Contact




# About **ALM ABSOLUTE**

The company **ABSOLUTE LASER & MFG.** from Toronto was founded in 2010 based on substantial knowledge and experience of its' founder acquired through a period of many years at the helm of several foreign companies specialized in mechanical metal processing. **ABSOLUTE LASER** offers its clients services of fulfilling project tasks and resolving technical problems in mechanical metal processing.

Through hiring of specialized qualified associates, through investing in knowledge and technology, as well as through professional networking, the company achieves significant business successes in providing metal laser cutting services and positions itself among the leaders in the industry in USA & Canada

As a result of our successful business thus far, both on the local and foreign markets in India, Sri Lanka, and Canada, we have achieved an optimal balance of price and quality. The high level of quality of our products is evidenced using ISO norms (9001), as well as of TQM-a in all our business processes.



**18,000** SQUARE FEET OF SPACE, 20  
MACHINERY INCLUDES  
LASER(SHEET & TUBE),CNC  
MILL,CNC LATHE, WELDING(TIG,MIG  
& ARC), POWER BRAKE  
PRESS,SELF CLICHING PERMNUT  
MACHINE & PUCHING MACHINE





Our vision is to be one of the leading service centers for metal processing in North America, recognized by buyers and business partners for our quality, reliability, and professionalism.. Absolute will continue to expand as a worldwide recognized leader in creative custom metal fabrication and manufacturing solutions.

## **Vision**

**ABSOLUTE LASER** will exceed our customers' expectations by providing dependable and cost-effective solutions via strong business partnerships, excellent product resolutions, devoted personnel, exceptional service, and safe practices.

## **Mission**

**ABSOLUTE LASER** Providing the highest-quality metal products and services available leads in a high degree of client satisfaction. We seek to excel in all manufacturing processes by employing the highest quality standards, ongoing workforce training, and well-maintained production equipment. As we strive to provide 100% client satisfaction, we are unwavering in our commitment to quality.

## **Quality**

Our company's success is reliant on how well we serve our customers. With this in mind, we have earned our reputation by assisting clients in achieving their objectives. Our expert support personnel and ability to fulfill tight delivery schedules have assisted us in building a significant client base and attracting new Cutting-Edge business in Canada, and across the United States. We conduct thorough performance reviews with our clients to guarantee that we fulfill completion dates and budgets.

## **Customer Service**



## ABSOLUTE LASER & MFG.

5 – Racine Road, Etobicoke – Ontario – M9W 2Z2

Phone: 416 – 749 – 5050

Website: [www.absolutelaser.ca](http://www.absolutelaser.ca)

Email : [info@absolutelaser.ca](mailto:info@absolutelaser.ca)

# Capabilities

### On Site Services

#### CNC Milling

Up to 30" X 62"

#### Conventional Milling

12" X 32"

#### CNC Turning

Up to 20" diameter and 82" length

#### Conventional Lathe

Up to 20" diameter and up to 130" length

#### Band Saw

Up to 14" wide and cut to any length.

#### Welding

MIG, TIG, Stick, Aluminum, Spot etc.

#### Sheet Laser

5 ft Wide – 10 ft length, Thickness 1-1/2"

#### Tube Laser

9" - Diameter (Round, Square, Rectangle, Triangle, C-channel, I Beams) Length up to 24 ft

#### Brake Press

1 mm to 3/8" X 12 feet long.

#### Laser Marking & Engraving

Parts, Product, and Gifts

### Outsourced Services

Powder Coating, Painting (Bake), Black Oxide, Nikel Plating, Black & Clear (Anodizing), Clear / Black Zinc, Chroming, Bright TIN Painting

### NEW ADDITION WITH EXISTING CAPACITY



#### LASER CUTTING (TUBE & SHEET)



#### CNC MILLING & LATHE



#### TIG, MIG, ARC WELDING

#### PEMSERTER INSTALLATION

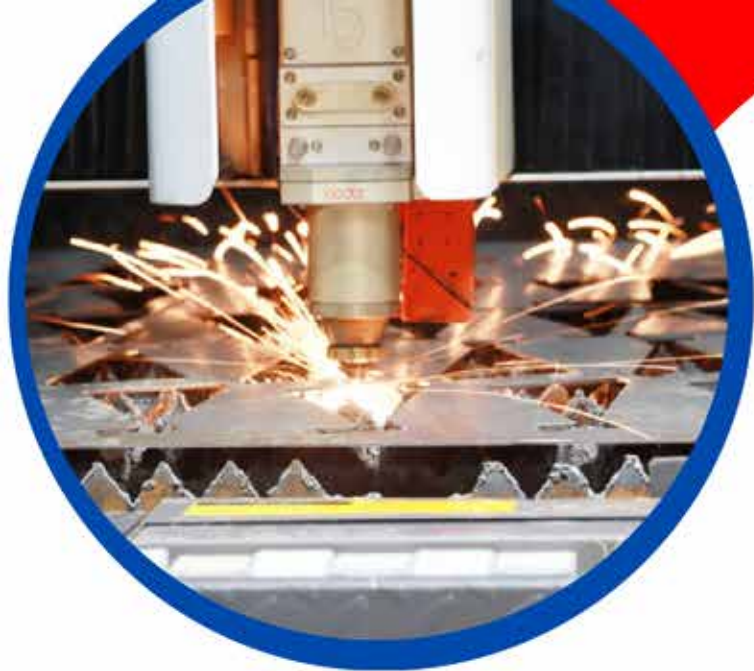


#### BRAKE PRESS



#### LASER MARKING



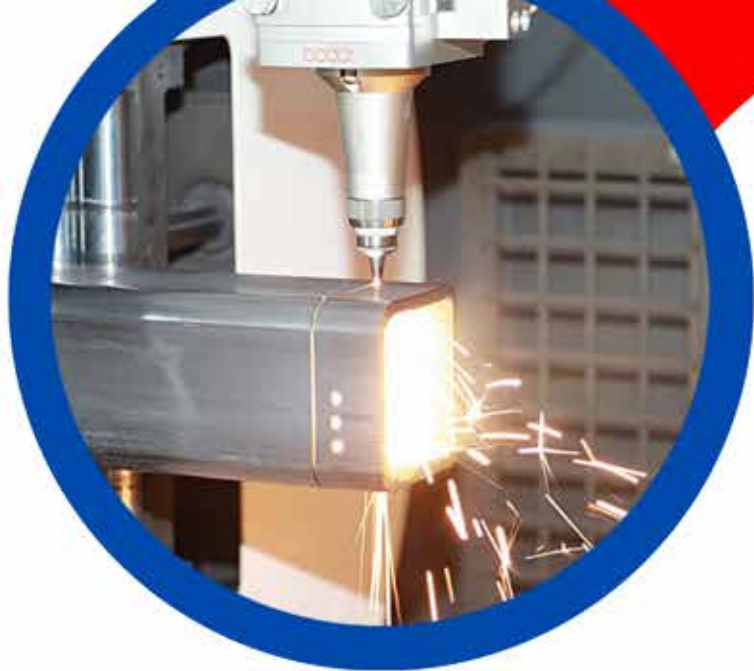


# Sheet Laser CUTTING SIZES

**5 FT WIDE – 10 FT LENGTH,  
THICKNESS INCH AND HALF**



Laser & MFG



# Tube Laser CUTTING SIZES

**5 FT WIDE – 10 FT LENGTH,  
THICKNESS INCH AND HALF**



Laser & MFG



# Milling & Lathe

## CUTTING SIZES

**5 FT WIDE – 10 FT LENGTH,  
THICKNESS INCH AND HALF**



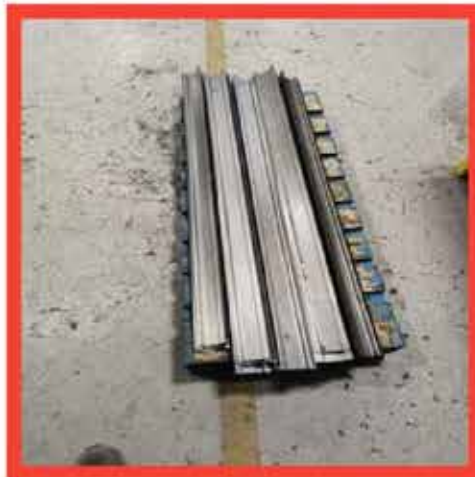




# BRAKE PRESS

## CUTTING SIZES

**5 FT WIDE – 10 FT LENGTH,  
THICKNESS INCH AND HALF**





## FACILITIES

Laser Cutting, CNC Milling & lathe, Welding, Brake Press, Welding, Pemserter, Turret Punch and Laser Marking







*Let's  
Connect  
With  
Us!*



Scan QR code to get Location on Mobile)

## Contact

### General

+1 (416) 749 5050

info@absolutelaser.ca

www.absolutelaser.ca

5 – Racine Road, Etobicoke – ON M9W 2Z2

### Personnel

+1 (905) 924 7272

kan@absolutelaser.ca